

## Screwed pipe connection DIN 11851

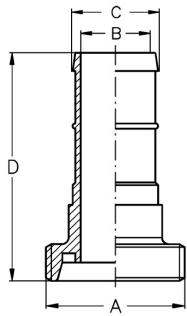
Art.No

EUR

Art.No

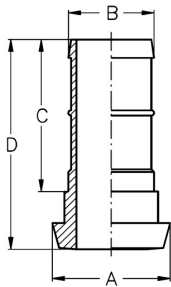
EUR

### Threaded hose ferrule beer



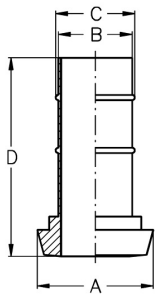
DN	A	B	C	D	AISI304		AISI316L-1.4404 / AISI316Ti-1.4571	
25	Rd 52x1/6"	24	27	87	415733	40,20	415833	62,10
32	Rd 58x1/6"	31	34	97	415734	49,90	415834	80,20
40	Rd 65x1/6"	32	43	112	415735	62,60	415835	95,50
50	Rd 78x1/6"	45	53	127	415736	67,60	415836	102,50
65	Rd 95x1/6"	60	68	148	415737	91,90	415837	122,80
80	Rd 110x1/4"	74	83	168	415738	200,10	415838	270,00
100	Rd 130x1/4"	93	103	190	415739	254,40	415839	340,40

### Conical hose ferrule



DN	A	B	C	D	AISI304		AISI316L-1.4404 / AISI316Ti-1.4571	
10	22	15	31	50	415930	36,50	416030	59,70
15	28	21	40	60	415931	36,50	416031	59,70
20	36	27	47	70	415932	36,50	416032	59,70
25	44	32	57	80	415933	38,40	416033	63,20
32	50	40	67	90	415934	45,70	416034	70,90
40	56	48	81	105	415935	58,10	416035	91,80
50	68	58	95	120	415936	68,80	416036	105,60
65	86	76	112	140	415937	99,80	416037	126,10
80	100	90	127	160	415938	148,10	416038	229,70
100	121	110	146	180	415939	218,80	416039	305,90

### Conical hose ferrule pipe



DN	A	B	C	D	AISI304		AISI316L-1.4404 / AISI316Ti-1.4571	
15	28	18	19,5	63	416131	26,90	416231	43,30
20	36	22	23,5	63	416132	26,90	416232	43,90
25	44	28	29,5	75	416133	27,70	416233	34,10
32	50	34	36	85	416134	28,50	416234	38,30
40	56	40	42	95	416135	28,90	416235	38,90
50	68	52	54	106	416136	32,40	416236	43,50
65	86	70	72	117	416137	43,80	416237	65,90
80	100	85	88	127	416138	62,60	416238	106,20
100	121	104	107	140	416139	98,80	416239	166,50